

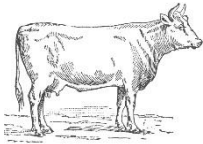
# FOOD

„Ernele“

All enjoyments of our region under one roof. Here you can wine and dine, do shopping or just stop for a bite or a good glass.

## 100 km

All food-products that we use are from a radius of 100 km



## From Nose to Tail

We get our meat from small local farmers and use it from “nose to tail”, for environmental reasons.

## From our own garden

Seasonal, freshly picked herbs and vegetables from our garden.



## Daily recommendations

Just ask our staff!



## STARTERS & ENTREMENTS

lettuce from our own garden  
with smelted goat cheese  
wrapped in bacon, rosemary-honey  
*Öl-Manufaktur Österle – Krumbach*  
*Ingo Metzler - Egg*  
*Fam. Greussing – Alpe Wildmoos*  
| € 9,50

ravioli of pumpkin with  
brussels sprouts-mushroom-salad  
and plum chutney  
*Simon Vetter – Lustenau*  
*Pilz Lenz – Lauterach*  
*Maria Wirth - Bezau*  
| € 13,50

pluma iberico  
with ravioli of crayfish and kale  
*Simon Vetter - Lustenau*  
*Regeena – Andelsbuch*  
| € 14,00

carpaccio of char  
with spring onion-vinaigrette  
and praline of black pudding  
*Fruchtexpress – Frastanz*  
*Jodok Geser – Andelsbuch*  
| € 14,00

## SOUPS

foam soup of pumpkin  
with kernels and oil  
*Vorarlberg Milch – Feldkirch*  
*Pilz Lenz - Lauterach* | € 6,50

stew soup of regional chicken  
with barley  
*Markus Dorner – Sibratsgfall*  
*Bruggmühle - Egg* | € 6,00

cream soup of cheese  
*Alpine dairy of KäseStrasse* | € 6,50

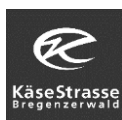
## MAIN COURSES

original “Wiener Schnitzel”  
from the saddle of veal  
served with mixed salad  
*butchery Fetz – Andelsbuch*  
*butchery Natter – Bersbuch* | € 21,00

fillet of beef  
with vegetables from our own garden  
& croquettes  
*butchery Schmuck – Sulzberg* | € 27,00

fish of the day  
*Claus Elmenreich – Egg*  
*Regula Bösch – Gaißau*  
*Jodok Geser – Andelsbuch* | rate of the day

ALSO ENJOY OUR DAILY RECOMMENDATIONS  
WE ARE OPENING WEDNESDAY UNTIL SATURDAY  
12:00PM TO 20:00PM



Our employees can provide you  
information about ingredients  
of the meal

# Ernele

LADENWIRTSCHAFT IM SCHIFF